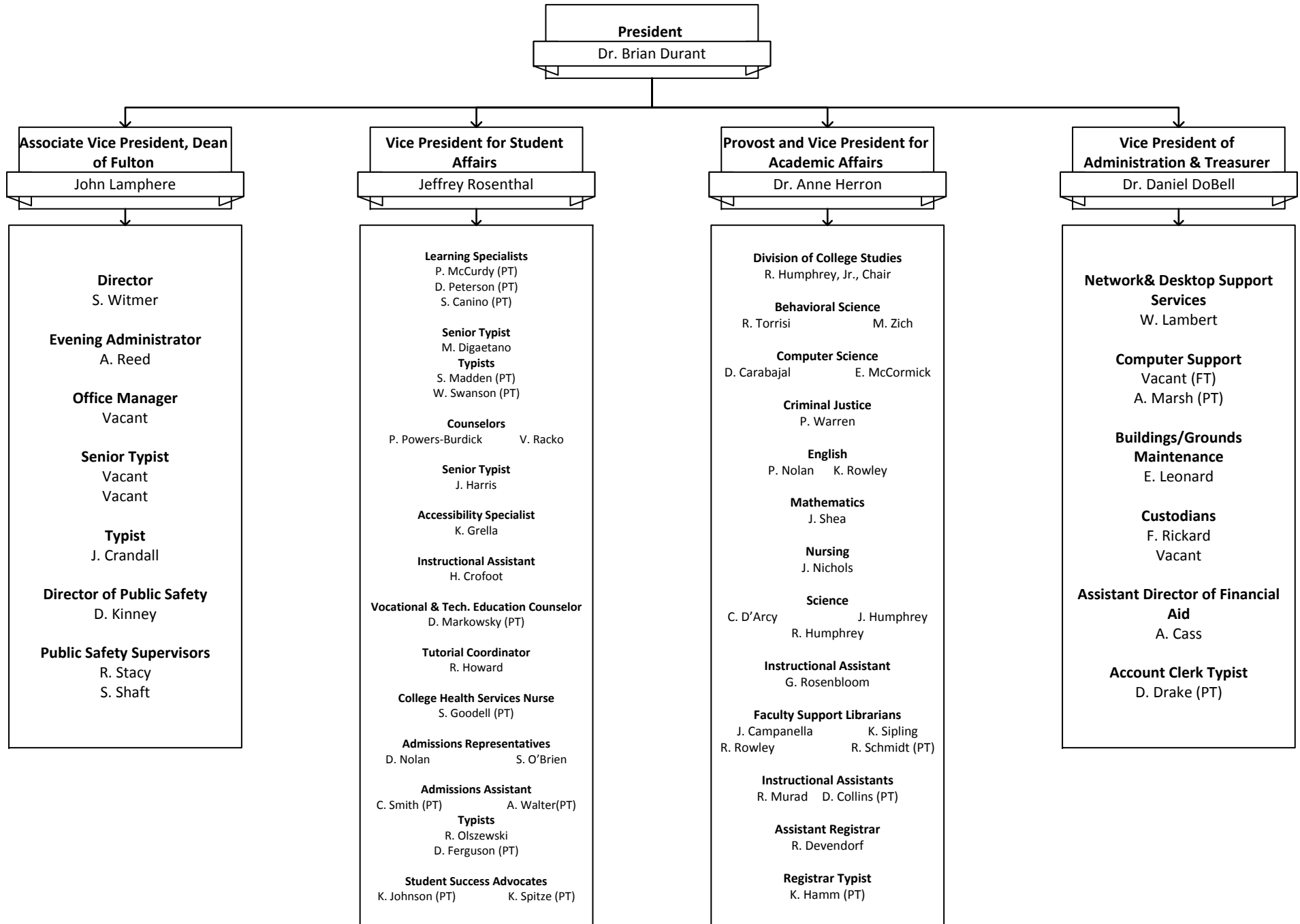


# Fulton Campus Organizational Chart



**Vice President for Student Affairs**

Jeffrey Rosenthal

**Principal Stenographer**

D. Duger (PT)

**Senior Typist**

M. Pasik (PT)

**Director, Center for Academic Success**

T. Kupp

**Accessibility Specialist**  
K. Grella

**Tutorial Coordinators**  
Auburn  
T. Hoercher  
Fulton  
R. Howard (PT)

**Learning Specialists**  
Auburn  
K. Jetty (PT)  
L. Mahoney (PT)  
Fulton  
P. McCurdy (PT)  
D. Peterson (PT)  
S. Canino (PT)

**Instructional Assistants**  
Auburn  
J. Shaw  
Fulton  
H. Crofoot

**Senior Typists**  
Auburn  
V. Hamberger  
Fulton  
M. DiGaetano

**Typists**  
Auburn  
N. Krone (PT)  
V. Swizdor (PT)  
Fulton  
S. Madden (PT)  
W. Swanson (PT)

**Interim Director, Centers for Student Engagement & Academic Advisement**

N. Adsitt

**Counselors**  
Auburn  
M. Osbourne  
E. Zizza  
G. Dixe (PT)  
Fulton  
P. Powers-Burdick  
V. Racko (PT)

**Coordinator, Wellness & Intervention Services**  
J. Blowers (PT)

**Vocational & Technical Education Counselor**  
Fulton  
D. Markowsky (PT)

**Senior Typist**  
S. Schafer  
S. Smithler

**Typist**  
K. Merritt (PT)

**Office Manager**  
Fulton  
J. Harris

**Student Success Advocates**  
Auburn  
H. Waldron (PT)  
J. Kellington (PT)  
Fulton  
K. Johnson (PT)  
K. Spitze (PT)

**Director, Admissions**

B. Blodgett

**Admissions Representative**  
Auburn  
J. DeBagio  
K. Diego  
Fulton  
D. Nolan  
S. O'Brien

**Admissions Assistant**  
Fulton  
C. Smith (PT)  
A. Walter (PT)

**Senior Typists**  
Auburn  
S. Arliss  
S. Dungey  
Fulton  
R. Olszewski

**Director, Athletics**

P. Liddell

**Instructional Assistant**  
T. Namisniak (PT)  
C. Nichols (PT)

**Fitness Center Staff**  
T. Borges (PT) C. Nichols (PT)  
R. Robillard (PT)  
A. Simmons (PT)

**Coaching Staff**  
Men's Basketball  
*Head Coach* T. Borges (PT)  
*Assistant* J. Brechue (VOL)  
T. Piscitelli (PT)

Women's Basketball  
*Head Coach* J. Alberici (PT)  
*Assistant* J. Cunliffe (VOL)  
N. Short (PT)

Bowling  
*Head Coach* C. Nichols (PT)  
*Assistant* R. Bertrand (PT)

Golf  
*Head Coach* J. Mosely (PT)

Men's Soccer  
*Head Coach*  
P. Bumbanac (PT)  
*Assistant* V. Ilicu (PT)

Women's Soccer  
*Head Coach*  
R. Robillard (PT)  
*Assistant* B. Mayville (PT)  
A. Simmons (PT)

Women's Softball  
*Head Coach* T. Hile (PT)  
*Assistant* K. Dolbear (PT)

**Athletic Training**  
**Victory Sports Medicine**  
ATC: D. Schultz

**Director of Institutional Research & Planning**

C. Runge

**Coordinator, Health Services**

S. Wilson

**Health Services Nurses**  
Auburn  
J. Graceffo (PT)  
Fulton  
S. Goodell (PT)

**Marketing Communications**

Vacant

**Graphic Designer**  
K. Thomas-Lillie

**Webmaster**  
A. Williams

**Director, Student Activities**

N. Lee

**Provost & VP for Academic Affairs**  
Dr. A. Herron

**School of Business, Chair**  
L. Miller

**Business Faculty**  
D. Matijas  
L. McCormick  
W. Prosser  
A. Valente

**School of Social Sciences and Education, Chair**  
L. Miller

**Behavioral/Social Science Faculty**  
N. A. Annorino  
R. Grube  
W. Prosser  
N. Thomas  
R. Torrissi  
M. Zich

**Criminal Justice Faculty**  
T. Misiaszek  
P. Warren (interim)

**Early Childhood Faculty**  
P. Gridley

**HPER Faculty**  
Athletic Director, P. Liddell  
L. Rooker  
E. Wagner

**School of Media & the Arts (SOMA), Chair**  
S. Keeler

**English Faculty**  
R. Bower  
M. Bulkot  
M. Felter  
M. Montgomery  
P. Nolan  
K. Rowley  
D. Valdina  
S. Wolstenholme

**Humanities Faculty**  
M. Johnson  
M. Cortese

**Telecommunications Engineer**  
D. Brill

**Instructional Assistant**  
J. Szczesniak

**Theatre Operations**  
R. Frame, Director

**School of Sciences, Technology, Engineering, & Math (STEM), Chair**  
C. Waters

**Computer Science Faculty**  
D. Carabajal  
B. Fitzgerald  
L. McCormick  
L. Miller

**Engineering Science Faculty**  
J. Campbell  
C. Waters

**GIS Faculty**  
A. Badruddin

**Mathematics Faculty**  
B. Fitzgerald  
K. Gross  
S. Reohr  
P. Richardson  
Fulton  
J. Shea

**Science Faculty**  
S. Coolican  
C. D'Arcy  
S. Gilmore  
T. Karle  
M. Pacelli  
Fulton  
J. Humphrey  
R. Humphrey

**Instructional Assistants**  
B. Norelius  
A. Hale (PT)  
G. Rosenbloom (PT)

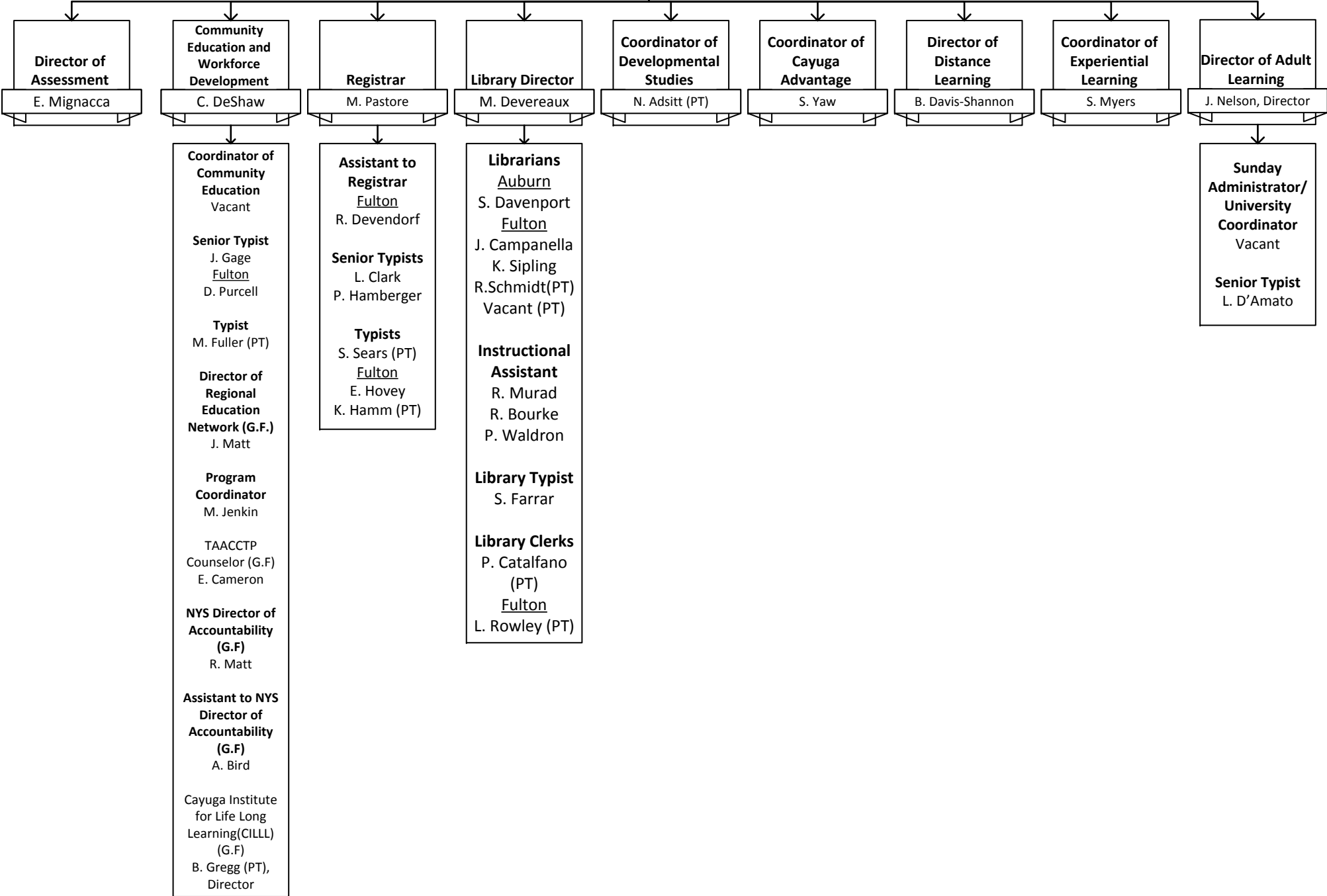
**School of Health Sciences, Chair**  
C. Waters

**Nursing Faculty**  
L. Alfieri, Director  
M. Driscoll  
B. Forrest  
C. Foster  
J. Nichols  
E. Smith  
D. Weatherstone

**Occupational Therapy Assistant Faculty**  
J. Meyers

**Nursing Senior Typist**  
J. Mudge (PT)

**Provost & VP for Academic Affairs**  
Dr. A. Herron



**VP of Administration & Treasurer**  
Dr. D. DoBell

